

# VitaMove Quick Start Guide



**1**

**Install the VitaMove software**  
Launch setup.exe

**2**

**Charge all recorders**  
Use USB charger and USB cables

**3**

**Indicator light**  
Orange : charging...  
Off : fully charged

**Disconnect recorders when fully charged**  
Charging can take upto 4-5 hours

**4**

**Setup new study**  
Insert all micro SD card via USB hub in PC  
Start VitaMove software and click "new study..." icon

**5**

**Fill in patient details and select setup**  
Fill in at least Personal ID & Lastname and select setup "Activity"

**6**

**Optional settings**  
Select extra recorders and sensors  
Set recording start and/or stoptime

**7**

**Insert micro SD memory cards in ALL recorders**  
Memory cards and recorders are color coded, and should have matching colors!!

**8**

**Check recorder synchronization**  
All recorders blink blue at exactly same time when synchronized

**9**

**Chest recorder**

**Right upper leg recorder**

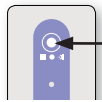
**Insert recorders in the pouches as indicated & strap recorders on the client**  
Blue recorder in chest strap, orange recorder leg strap. Ensure devices are straight!

**10**

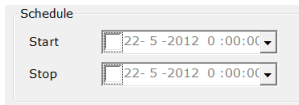
**Install optional sensors (ECG, EOG, EEG or EMG), environmental light, respiratory, ... using the VMExG amplifier**

<b>BLUE</b>	<b>ORANGE</b>	<b>YELLOW</b>	<b>GREEN</b>	<b>PURPLE</b>
Chest Trunk	Upper Right Leg	optional Upper Left Leg	Upper Right Arm	Upper Left Arm

11



Press & hold for 5 seconds  
Release within 2 seconds when status indicator changes color



**Start a recording manually by pressing the button on the blue recorder**

The other recorders receive a wireless start signal from the blue recorder  
The recording will start automatically when a start time has been set in the VitaMove software (manual start is not possible then)

12

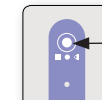


Press for 1 second  
Blue blink (10x): recording..  
Orange blink (1x): recording stopped

**Check recorder status**

Press the recorder button to check device status

13



Press for 1 second

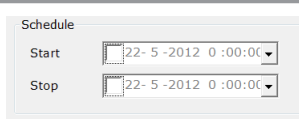
**Mark or annotate an event**

Press the recorder button for 1 second to mark an event

14



Press & hold for 5 seconds  
Release within 2seconds when status indicator changes color

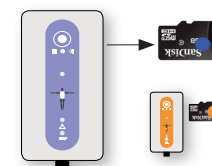


Repeat above procedure once more  
within 60 seconds to confirm stop recording!!

**Stop a recording manually by pressing the button on blue recorder**

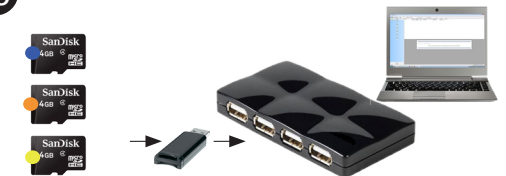
The other recorders will also stop. The recording is fully stopped when the status indicator on all recorders blink blue every 3 seconds. The recording will stop automatically when a stop time has been scheduled in VitaMove software

15



**Remove micro SD memory cards from ALL recorders**

16



**Insert ALL memory cards in the PC using the USB HUB**  
Use the micro SD memory cards to USB adapters

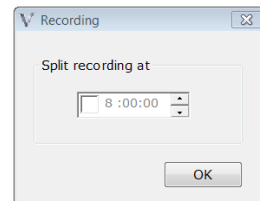
17



**Download a recording**

Follow the instructions of the download wizard

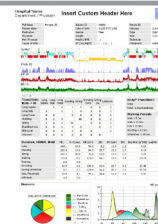
18



**Split a recording**

Check when you want to split a recording in 24 hour periods

19



**Analysis and Reporting**

See the VitaMove software reference chart for further information

